



**Department of School Facilities**

Wayne Crosby, Director

8045 Harriet Tubman Lane, Columbia MD 21044  
Phone: 410 313 7084 Fax: 410 313 7093

Dan Hittenberger  
Acry-Tech Coatings, Inc.  
3601 NE 5th Ave • Oakland Park, FL 33334  
954-565-6001 www.acrytech.com

November 28, 2011

Re: **Safe-Tread Coating**

Dan,

Good to talk with you again. I want to extend my sincere gratitude to you and your staff for the excellent services you provided for us over the past several years. We have been extremely satisfied with the performance of this product from start to finish. We have purchased over 300 gallons your **Safe-Tread** coating to complete a multitude of projects.

The main project that we started to use the **Safe-Tread** on is our aluminum ramps that we are using for the portable classrooms at our schools. I have attached several photos of before and after the coating process. We have found that even though the aluminum ramps have grooves extruded into them, they still have a tendency to get slippery in wet and icy conditions, especially when you get to the top and change direction, causing staff and students to fall and get injured. We used several ramps as test ramps utilizing several products on the market.

**We decided that Safe-Tread was best product for our needs for several reasons.**

- It was the **easiest to apply**; being single component and the grit texture already mixed in
- **Thickest to fill the grooves**; to get above the grooves and create a non directional grip pattern.
- **Durable**; we have not had any wear off.
- **Graffiti sprayed on it was removed** with a high temperature pressure washer and the **Safe-Tread stuck** and we didn't have to recoat
- Also was **most cost effective product available**. After we discovered that the **Safe-Tread was exceeding our performance expectations** we decided to coat all 125 ramps from top to bottom.

I have also used the **Safe-Tread** on a metal floor in a Walk-In Freezer. The freezer was shut down to dry out. The existing floor was prepped, coated and cured. I guess time will tell how long this will last a in -20F freezer.

Another application was used on two flights of black slate steps in an elementary school that were slippery for the staff and students to use. I prepped and coated the front 4" of the stair tread. All of the Staff and students rave about how they perform as well as the color difference so the individual steps can be seen well.

Thanks again for the great product and service that you provide.

Jonathan Naill  
Leadman – Paint/Floor  
Building Services Department  
Howard County Public School System, Maryland  
410-313-7084



Building Services, Herb Savje, Manager  
8045 Harriet Tubman Lane Columbia MD 21044  
Phone 410 313-7084 Fax 410 313 7093

Custodial Services, Olivia Claus, Manager  
8800 North Ridge Road, Ellicott City MD 21043  
Phone 410 313 2595 Fax 410 313 2598

Grounds Services, Keith Richardson, Manager  
8800 North Ridge Road, Ellicott City, MD 21043  
Phone 410 313 2577 Fax 410 313 2599

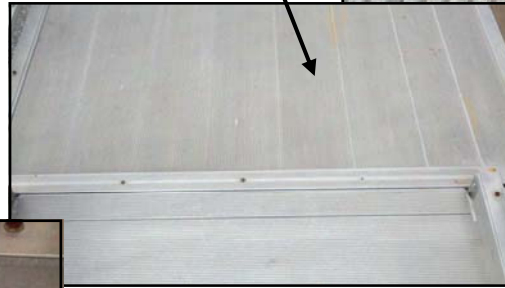
Energy Management Services  
Diane Sweeney, Specialist  
8045 Harriet Tubman Lane, Columbia MD 21044  
Phone 410 313 7024 Ext. 259 Fax 443 583 1272

Integrated Pest Management Services  
Mark Hardin, IPM Specialist  
10920 Route 108, Ellicott City, MD 21042  
Phone 410 313 7180 Fax 410 313 6989

**Howard County Public Schools** in Maryland has metal ramps for their portable classrooms.

The metal ramps have raised ribs to help improve traction.

But, when wet the ramps were very slippery. Students and teachers have slipped and fallen on these slippery ramps and some were injured.



**Safe Tread provides a safe, non slip surface.**

The maintenance personnel applied **Safe Tread** to the ramp surfaces and found that the **Safe Tread** filled the grooves and provided a safe footing for the students and teachers.

Now the rain, snow and ice are no problem.

They even found that graffiti was easy to remove from the **Safe Tread** surface with a hot water pressure washer and the **Safe Tread** wasn't harmed!



**Safe Tread Applied**



**Safe Tread creates a grippy surface for maximum safety**



**A safe footing—  
Economically**

**With Safe Tread!**

**Find Safe Tread at:  
[www.acrytech.com](http://www.acrytech.com)**